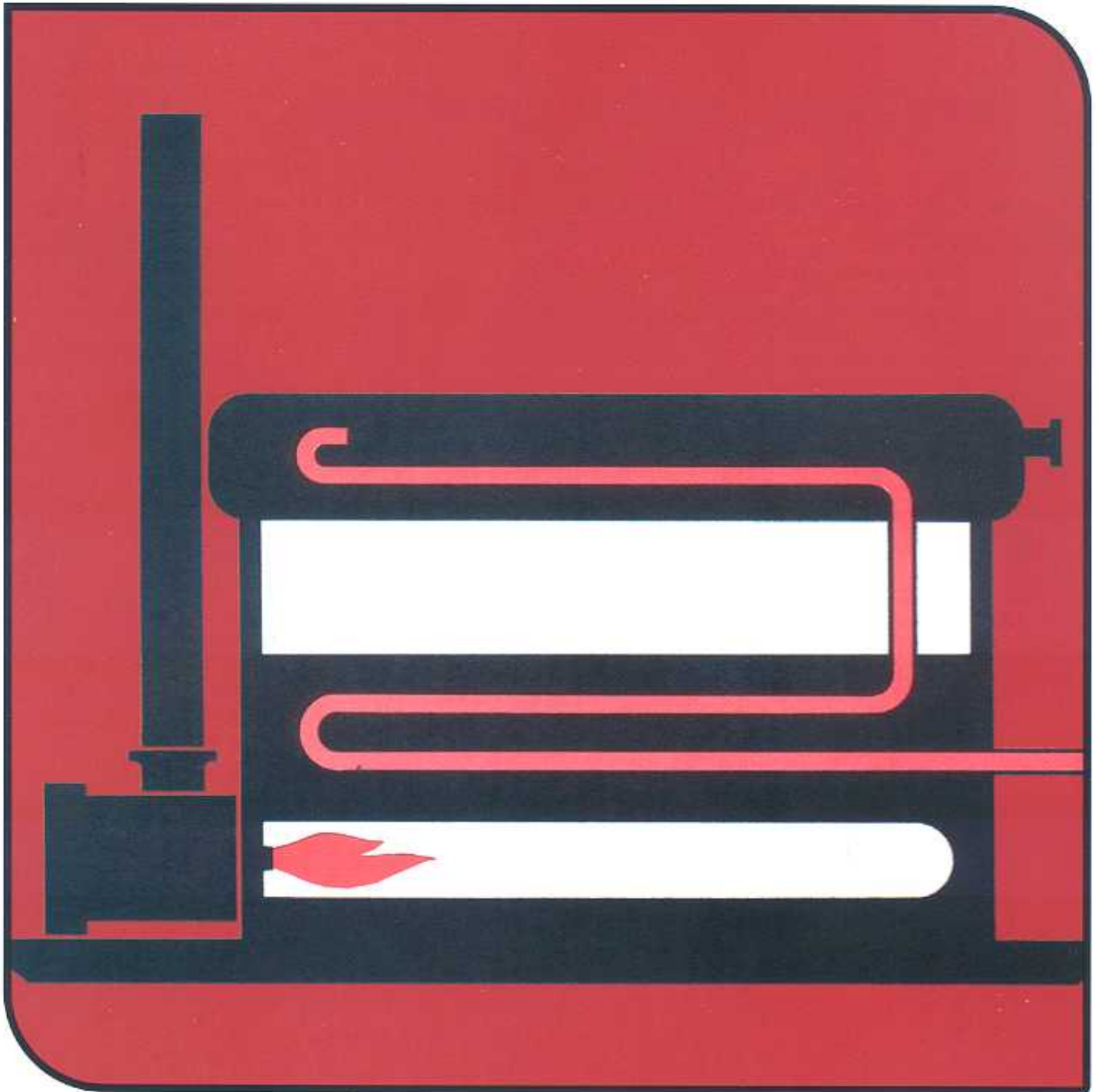


Enclosed Production Unit



A complete, compact, fully enclosed and fully automatic heating, separating and choking unit that incorporates maximum safety and control features for highest production and lowest operating costs. Available in 16 standard sizes for handling wellstreams from 5.8 to 39.0 MMSCFD.



Now ...a fully enclosed, packaged production unit that offers better quality control and consistently high efficiency in all kinds of weather and over a wide range of wellstream conditions.

Here is the ultimate in an enclosed production unit, incorporating all of the refinements BS&B's broad experience and know-how make possible. Regardless of your production requirements or the nature of the location the new BS&B enclosed production unit (NEPU) will deliver larger volumes of sales line gas at a constant temperature, pressure and quality while removing more free water and saleable hydrocarbons. All of this in the smallest possible package, with lowest installation and operating costs.

Every inch of the design makes an effective contribution to the performance and efficiency of the BS&B NEPU. The entire unit is piped, tested and skid mounted, requiring little more of the processor than connection of the wellstream and the fluid outlets.

All in all it is the best buy on the market, considering the equipment furnished, the completeness of the

pipng and assembly, and the efficient performance.

Complete Redesign

The entire line has been redesigned and improved; from the new oversized fire box-which results in reduced combustion back pressure-to the new improved controls for increased safety and unit control.

All this in one skid-mounted enclosed, automatic unit

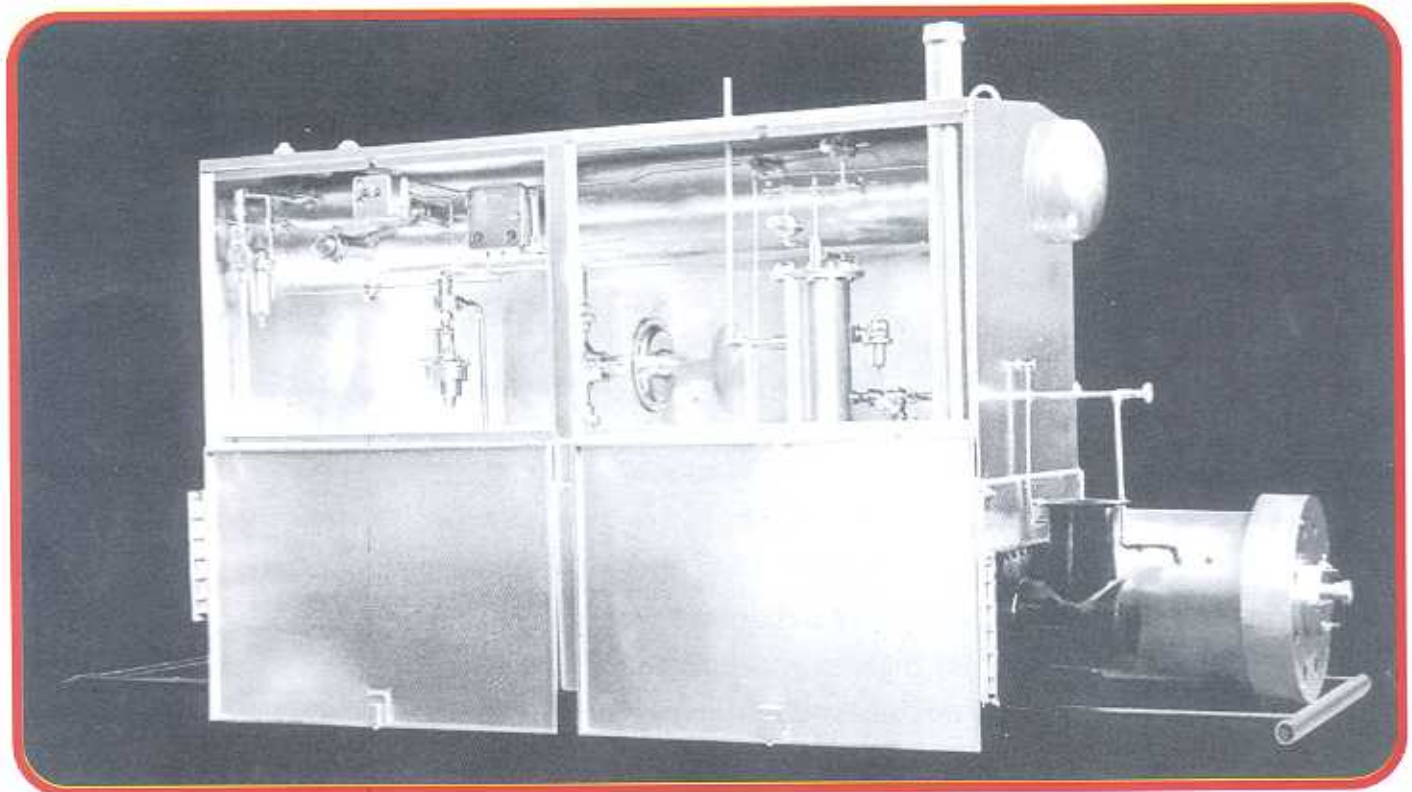
This compact assembly performs these six important functions for more profitable gas production:

- 1-heats the wellstream in a heater coil to assure safe pressure reduction in the choke.
- 2-choke the wellstream to reduce the pressure from wellstream to sales line pressure.
- 3-separates the wellstream liquids from the gas and recovers valuable hydrocarbon liquids.

- 4-separates free water from the gas and the hydrocarbon liquids.
- 5-maintains specified temperature of the gas entering the sales line.
- 6-gives weather - protected, no freeze, trouble-free operation.

Check these many important standard features you get only with a BS&B NEPU:

- 1 - compact modular design and manufacturing approach
- 2 - skid mounted
- 3 - pre-piped
- 4 - shop assembled and ready for delivery soon after well is completed
- 5 - safety equipped
- 6 - BS&B Flame Arrestor
- 7 - 3-phase operation
- 8 - removable choke and coil
- 9 - cold-weather design dump valves
- 10 - water saver tube



- 11 - completely seal-welded lifting lugs and roof
- 12 - rotatable inspection window on flame arrestor
- 13 - valving and piping at bench height
- 14 - leakproof, reinforced doors with positive latches, swing down-out of the way and out of the wind
- 15 - smaller heater box with reduced water bath requirement
- 16 - oversize firetube with BS&B full octave tuned firing
- 17 - units can be completely drained from several drain positions

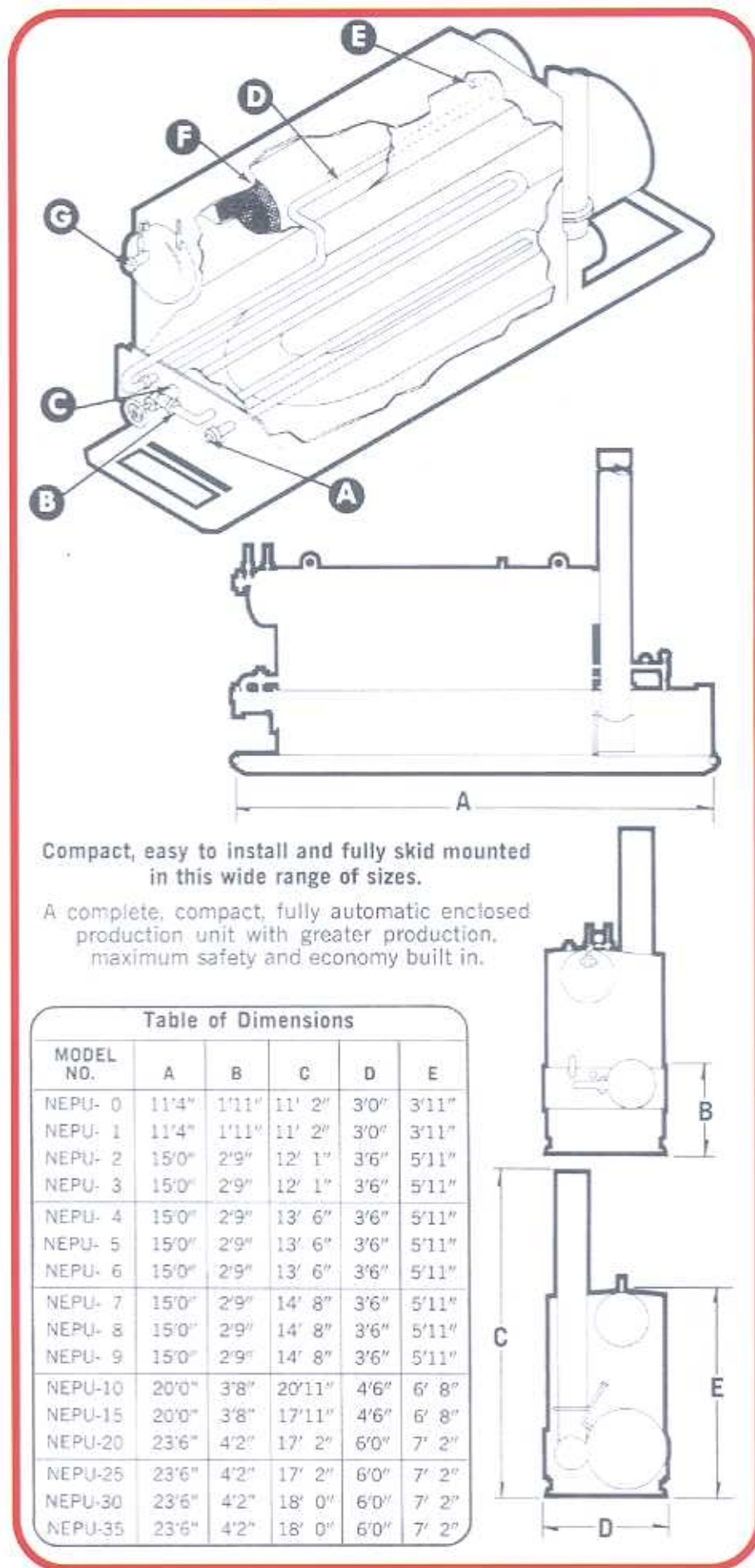
How it works:

The wellstream enters the first pass of the coil (A) within the indirect heater, and then flows through the adjustable choke (B) where pressure is reduced to the appropriate sales line level. This choking action takes place at a point submerged in the heater liquid bath, preventing hydrate formation in the choke. After pressure reduction with correspondingly lowered temperature, the wellstream is again heated while traveling through the second pass of the coil (C) within the heater.

Following choking and reheating, wellstream gas flows through a single-pass coil (D) within the separator, giving up heat to prevent separator liquids from freezing. Then the wellstream enters the separator (E) where liquid hydrocarbons and free water are removed from the gas. Gas flows through a wire mesh mist extractor (F) and on to the sales line (G). The liquid hydrocarbons are automatically discharged from the NEPU to storage. Separator is equipped with internals for 3-phase operation and with optional 3-phase controls will automatically dump separated water to drain.

Heater fuel gas is preheated in a coil in the heater liquid bath. A fuel gas liquid trap with float shut-off for safety, as well as the necessary regulators, thermometers and other safety and product quality controls are included.

Both heater liquid bath temperature and separator gas temperature are controlled by thermostats. A high temperature shutdown is included to shut down the heater in case the bath temperature rises too high.



New bench-height convenience in 16 standard models and wide range of optional equipment and accessories

Inquiries:

Please furnish the following information on the operating conditions with your inquiry:

1. Gas flow rate
2. Gas specific gravity
3. Oil flow rate
4. Oil gravity
5. Oil pour point
6. Water flow rate
7. Water gravity
8. Operating pressure
9. Maximum working pressure
10. Well-head shut in pressure
11. Inlet temperature
12. Outlet temperature desired
13. Coil size and working pressure

Optional Accessories:

1. Three-phase valve and controls
2. Hi/lo shutdown valve and pilot controller
3. Low pressure flash separator
4. Packaged gas meter kit:
Consisting of orifice flanges,
meter run and meter
5. Automatic diaphragm operated heater choke.



Standard Model Designations and Specifications

Catalog Number	HORIZONTAL SEPARATOR			INDIRECT HEATER			Approx. Shipping Wt. Lbs
	Vessel Size 1000 psig ASME	Nom. Gas Capacity MMSCFD	Nom. Oil Capacity Bbls/Day	Firebox BTU/Hr. Rating	Flow Coil	Skid Sizes	
NEPU-0	16"x 5'0"	5.8	450	90,000	6-2-3-DP	3'0"x 11'4"	4,900
NEPU-1	16"x 7'6"	7.25	675	125,000	6-2-3-DP	3'0"x 11'4"	5,200
NEPU-2	16"x 7'6"	7.25	675	250,000	6-2-3-DP	3'6"x 15'0"	5,800
NEPU-3	16"x 10'0"	8.35	900	250,000	6-2-3-DP	3'6"x 15'0"	5,900
NEPU-4	16"x 7'6"	7.25	675	500,000	8-2-3-DP	3'6"x 15'0"	5,800
NEPU-5	16"x 10'0"	8.35	900	500,000	8-2-3-DP	3'6"x 15'0"	5,900
NEPU-6	20"x 7'6"	10.0	900	500,000	8-2-3-DP	3'6"x 15'0"	6,300
NEPU-7	16"x 10'0"	8.35	900	750,000	10-2-3-DP	3'6"x 15'0"	6,900
NEPU-8	20"x 7'6"	10.0	900	750,000	10-2-3-DP	3'6"x 15'0"	7,300
NEPU-9	20"x 10'0"	12.8	1,200	750,000	10-2-3-DP	3'6"x 15'0"	7,600
NEPU-10	20"x 10'0"	12.8	1,200	1,000,000	12-2-3-DP	4'6"x 20'	12,700
NEPU-15	24"x 10'0"	18.7	1,400	1,500,000	16-2-3-DP	4'6"x 20'	16,800
NEPU-20	24"x 10'0"	18.7	1,400	2,000,000	20-2-3-DP	6'0"x 23'6"	21,200
NEPU-25	30"x 10'0"	29.3	2,200	2,000,000	20-2-3-DP	6'0"x 23'6"	21,200
NEPU-30	30"x 10'0"	29.3	2,200	3,000,000	20-2-3-DP	6'0"x 23'6"	22,500
NEPU-35	30"x 15'0"	39.0	3,200	3,000,000	20-2-3-DP	6'0"x 23'6"	24,000

* Higher Working Press. Separator available on Application.

